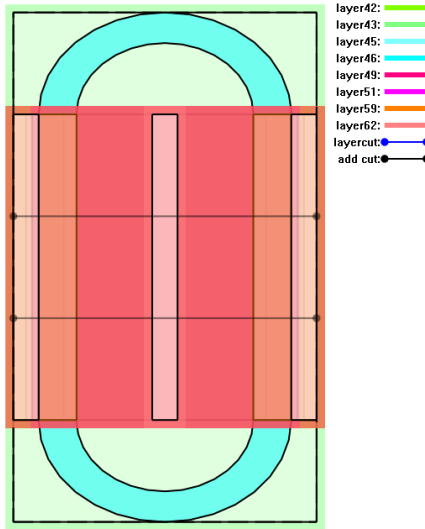


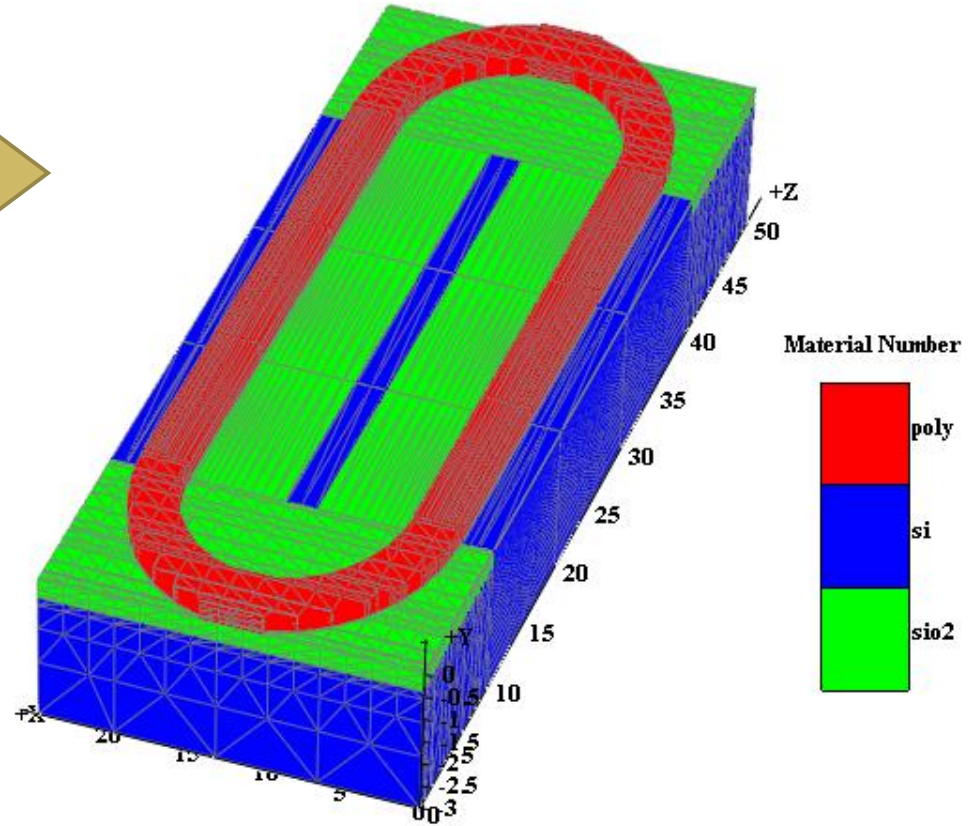
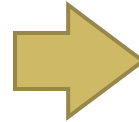
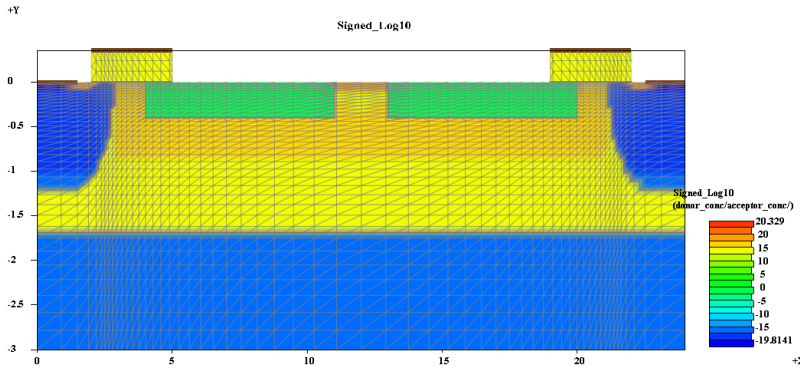
Lighting up the Semiconductor World...

Power Semiconductor Devices Simulation with **Crosslight TCAD Tools**

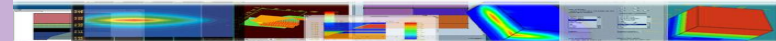
LDMOS with Race Track Poly Gate



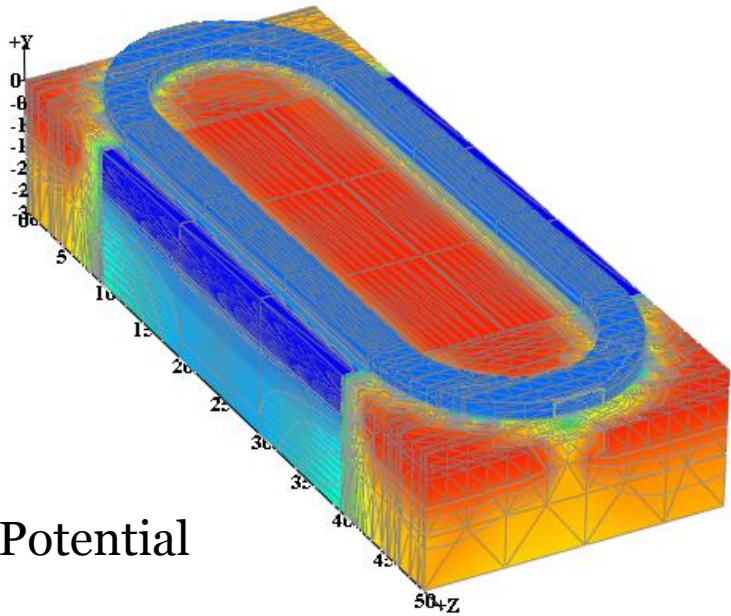
From MaskEditor



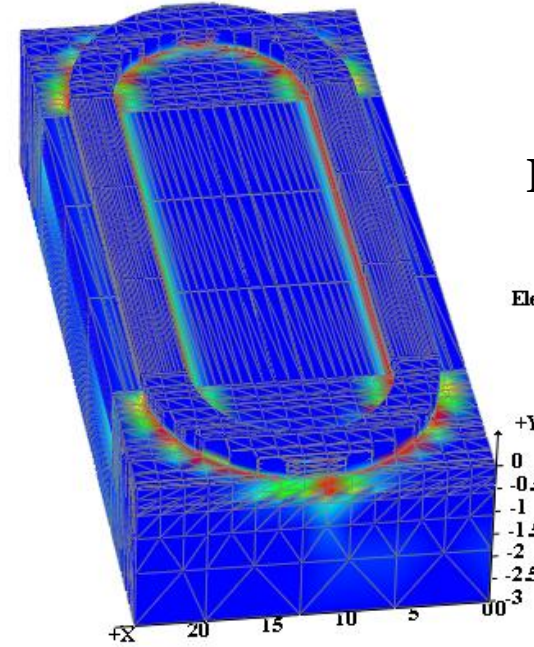
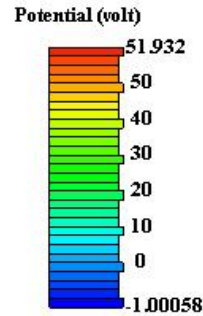
CSuprem Simulation Result



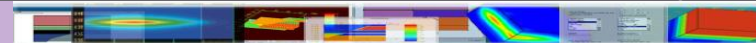
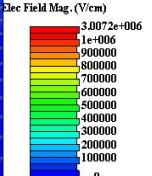
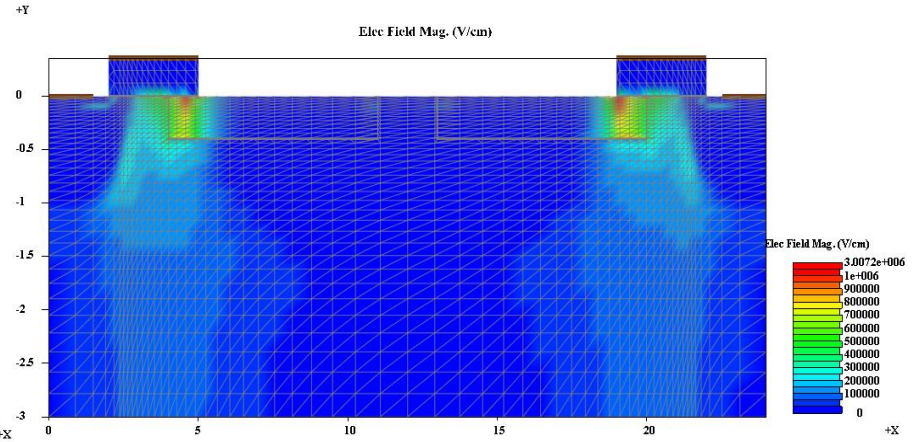
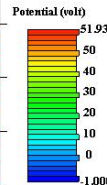
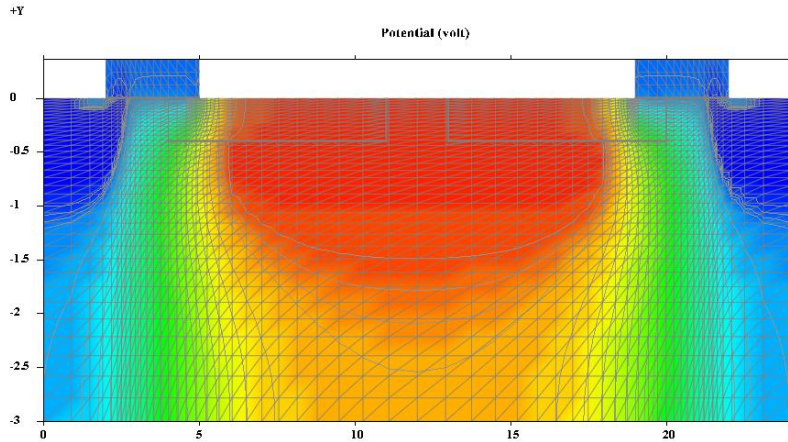
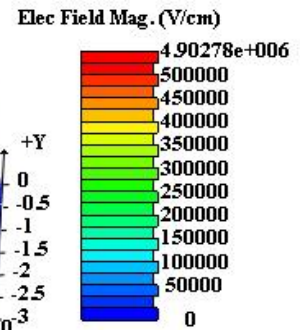
LDMOS with Race Track Poly Gate



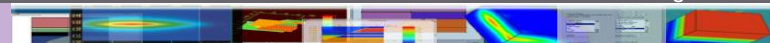
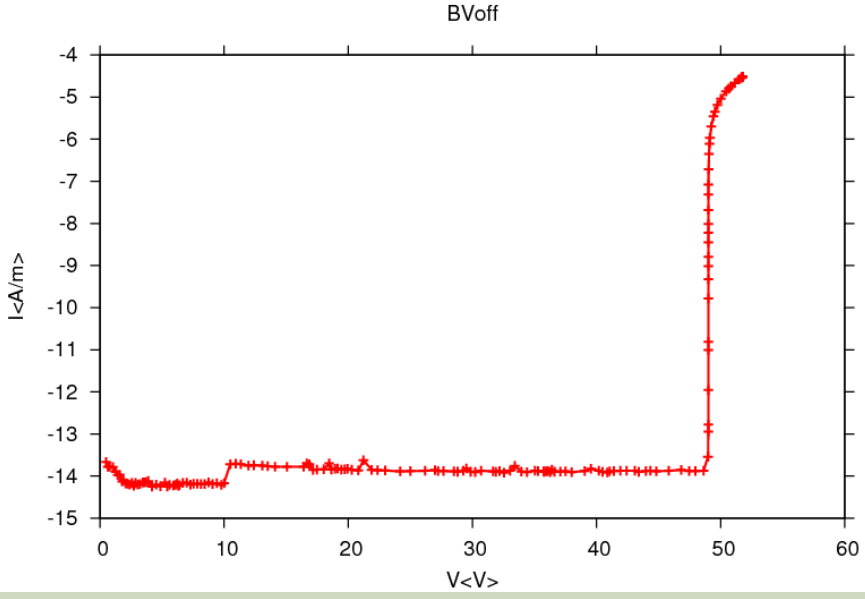
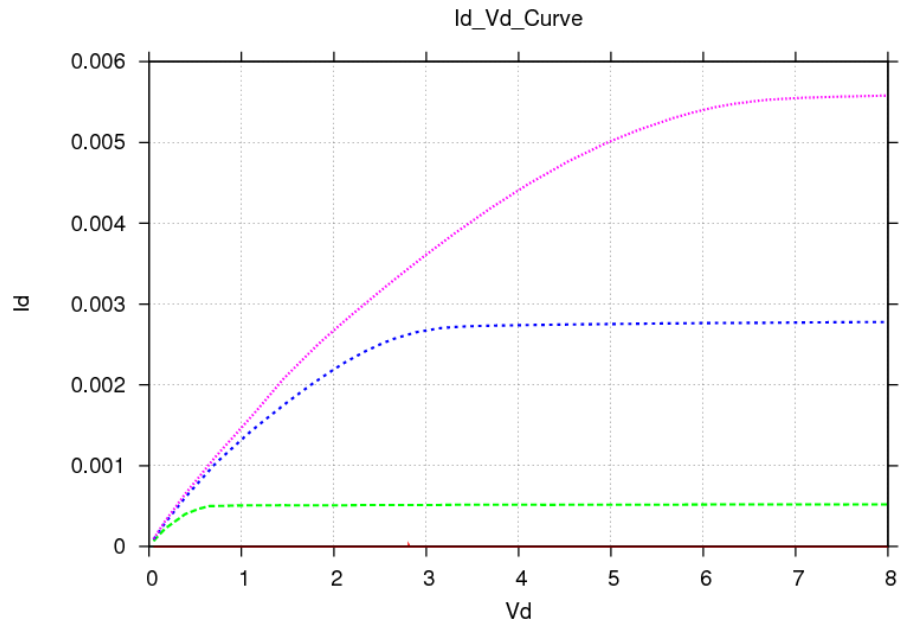
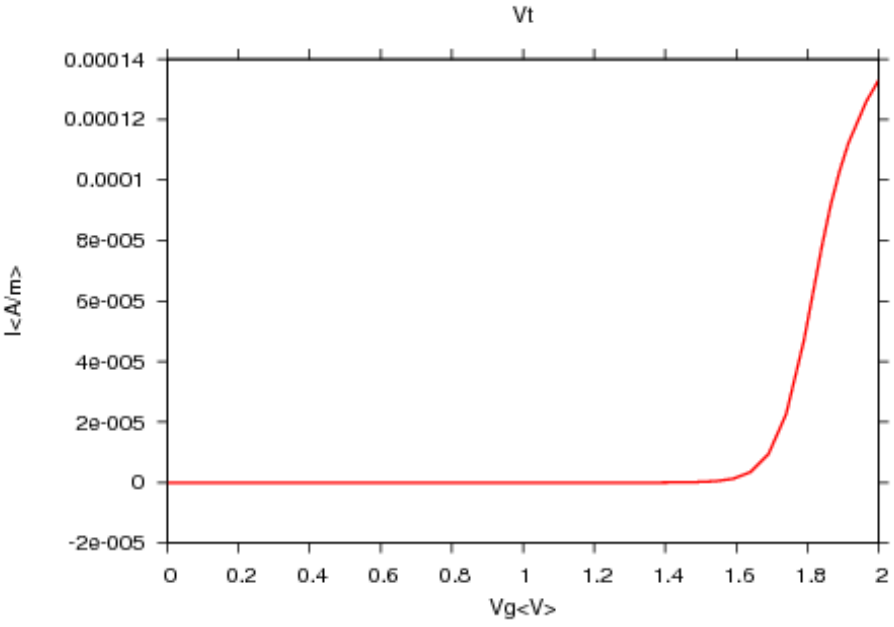
Potential



E-Field

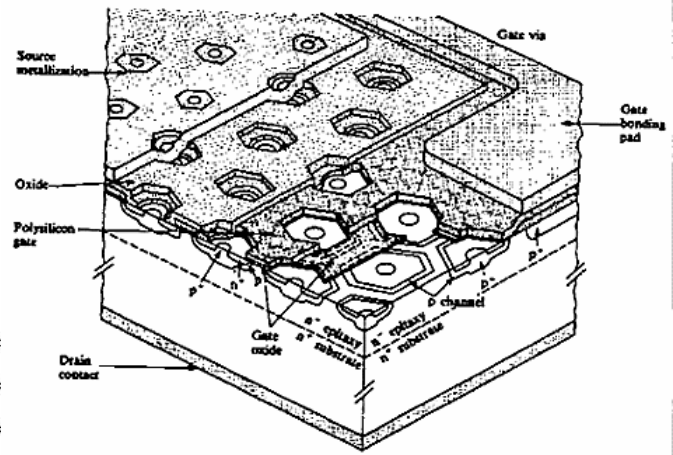
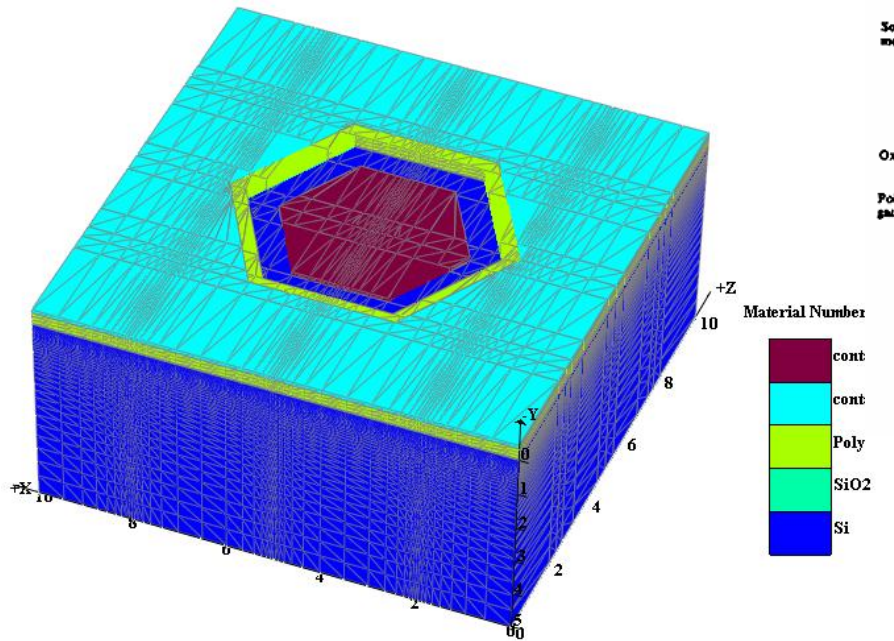


LDMOS with Race Track Poly Gate

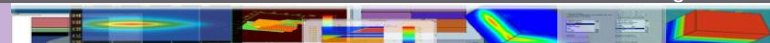
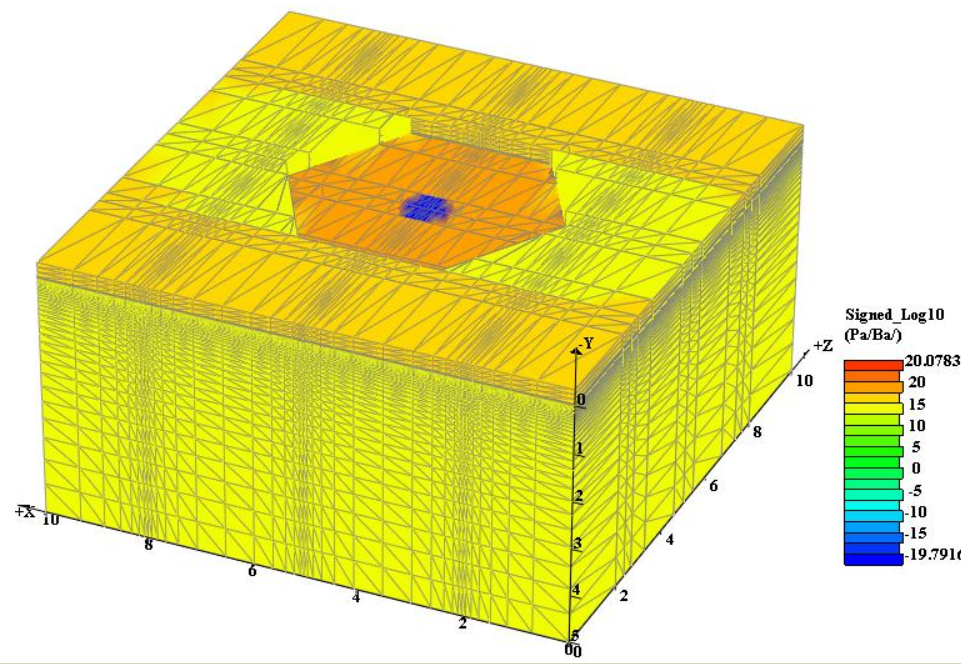
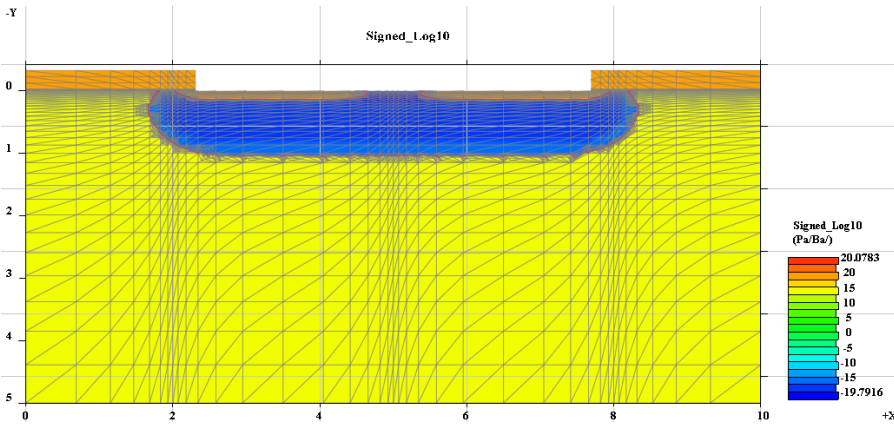


Vertical DMOS with Hexagonal Poly Gate (HexFET)

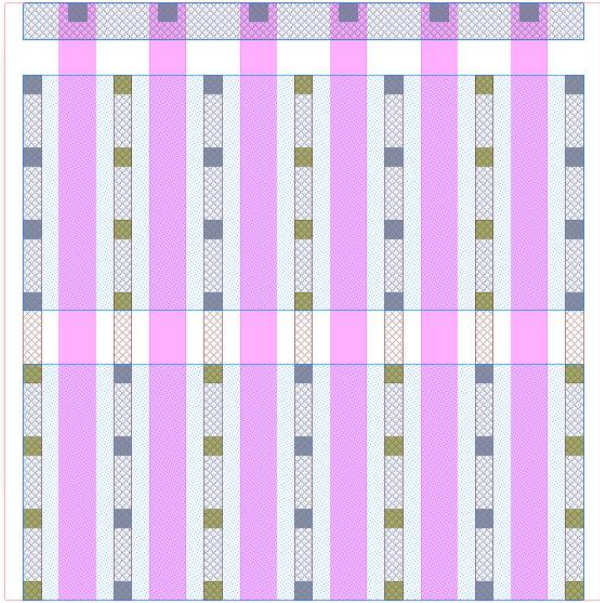
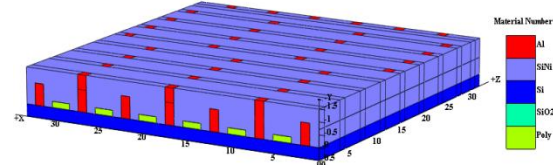
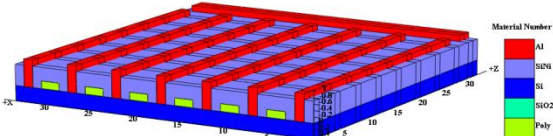
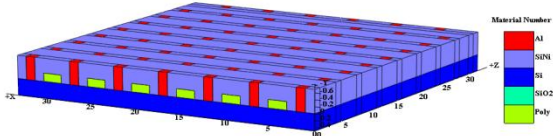
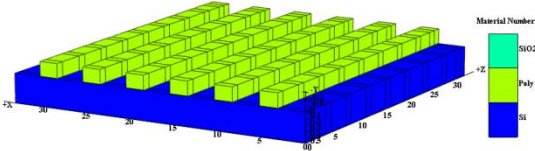
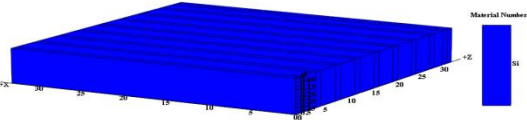
From International Rectifier



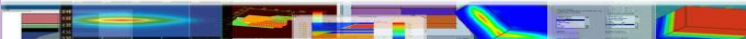
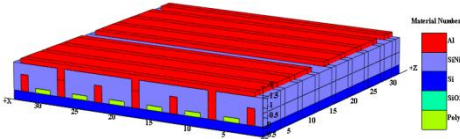
<http://www.irf.com/technical-info/guide/device.html>



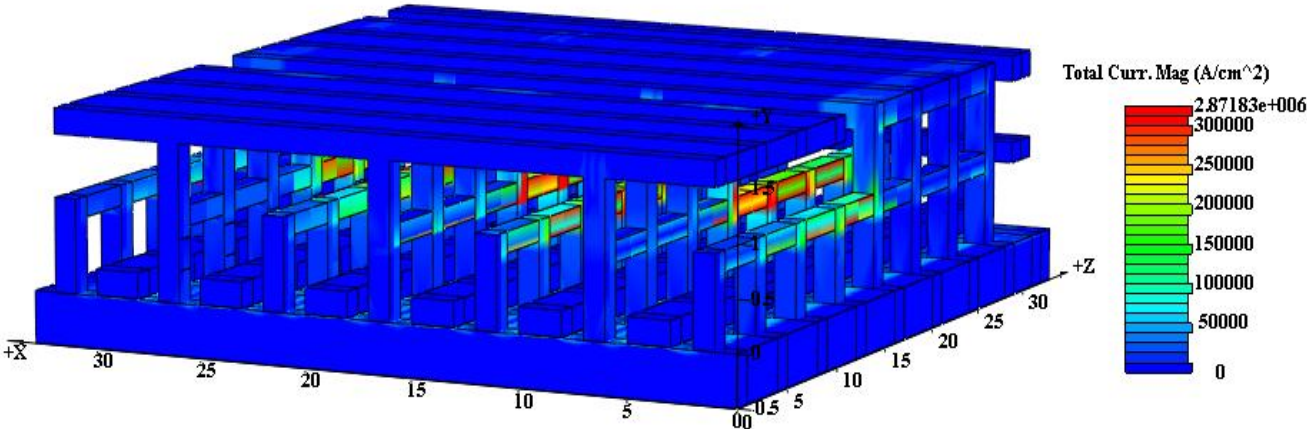
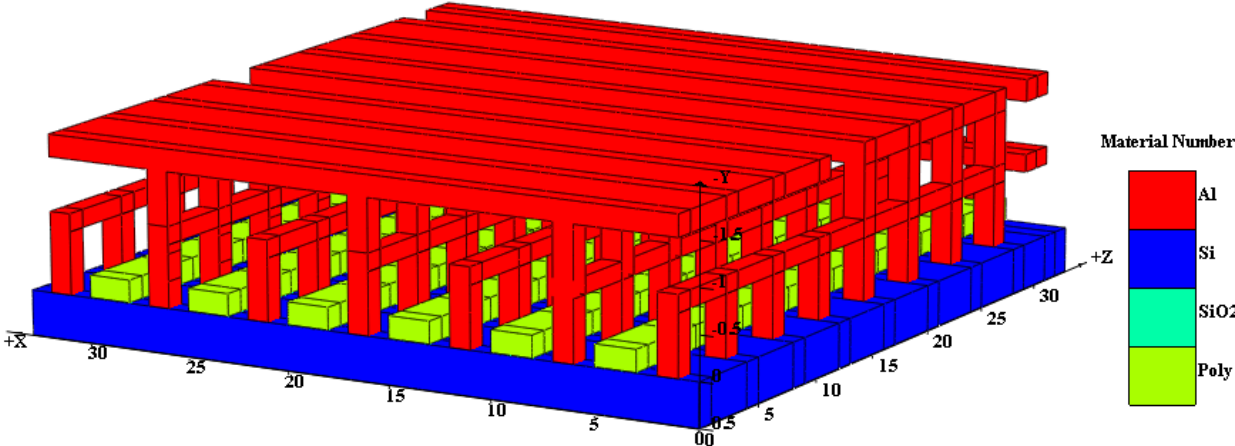
Interconnect



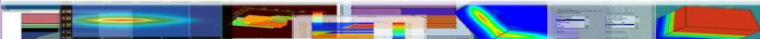
		1-Active
		2-Poly
		3-Contact
		4-Metal1
		5-Via1
		6-Metal2



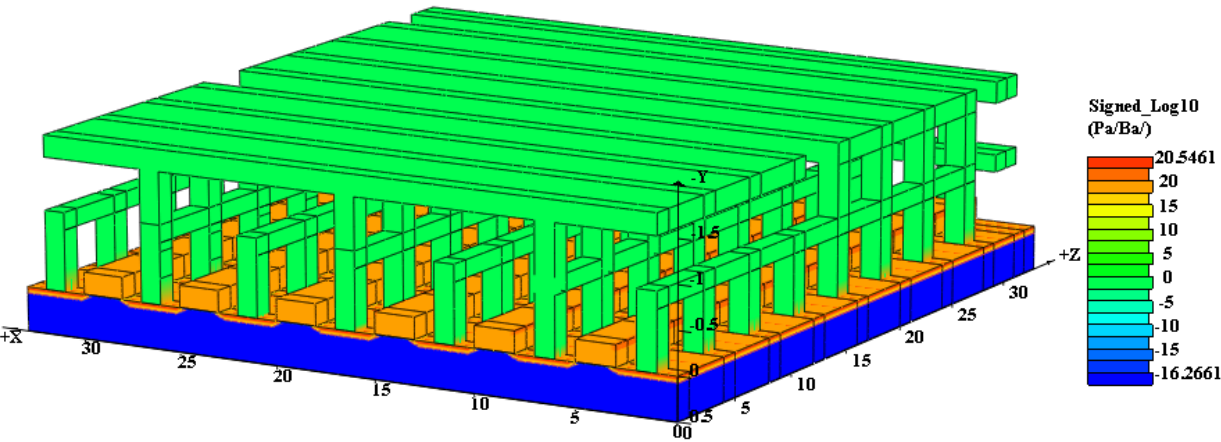
Interconnect



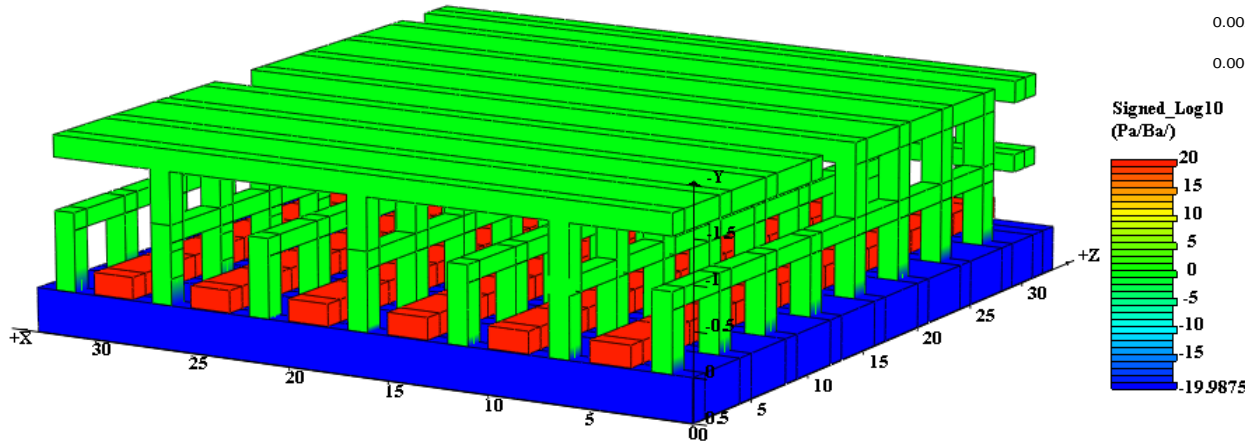
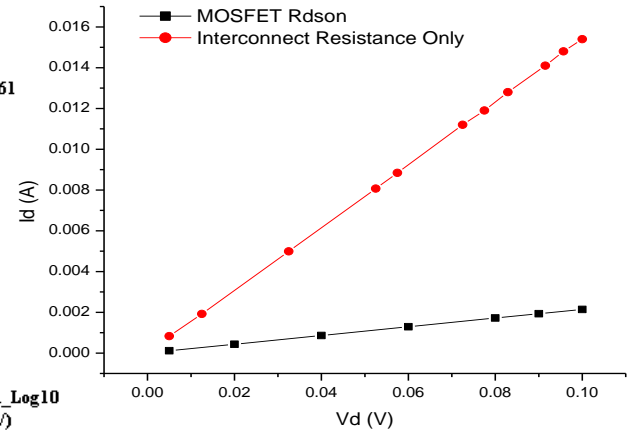
Current magnitude plot



Interconnect



Interconnect Simulation with MOSFET Devices



Interconnect Simulation without MOSFET Devices

Comparing Rdson with and without MOSFET

